



A1 WHEELCHAIR SERVICES

SALES | REPAIRS | RENTALS | TECHNOLOGY



F | 0800 22 22 84 P | 06 356 7344

E | enquiries@a1wheelchairs.co.nz

www.a1wheelchairs.co.nz

17 Lombard Street, Palmerston North, 4410

DAESSY MOUNTING

TECHNICAL INFORMATION & COMPONENTS



Wheelchair Mounting for Communication Devices & Laptops

General

The purpose of a wheelchair mount is to securely hold an augmentative communication or laptop computer in the correct position for the person using the wheelchair to access the device as comfortably as possible. Although the most obvious application of DAESSY mounts is to wheelchairs, Frame Clamps can be affixed to any sturdy support structure such as a bed-frame or table leg.

The DAESSY Mounting System uses a proprietary Quick Release mechanism to allow the mounted devices to be readily detached from a mount for storage or transport or for use in a different location. A Quick Release base is attached to the DAESSY Wheelchair Mounting assembly, Desk Mount or other location. The Quick Release Base has a semi-circular shape and spring-loaded pin which engage a cutout in a Quick Release Plate that is affixed to the device. The device may be held in a Device Holder designed by DAESSY to provide secure attachment. A laptop computer may be mounted in a custom-built Laptop Holder.

Fitting and Customisation

The choice of an appropriate mount assembly will depend on a number of factors including the abilities of the user, the type of device, and the type of wheelchair. Not all standard DAESSY mount assemblies are appropriate for all situations.

The team of professionals involved with any person using an augmentative communication device must determine which mount is most suitable. In some cases it may be necessary to modify the standard mount assembly or construct a custom one. All DAESSY mount assemblies are customisable. The DAESSY Mounting System is a component based system that allows for customisation and limitless configurations to meet mounting needs. If a standard mount assembly is not appropriate for a particular situation it is possible to build an assembly from individual components to meet the needs.

Each DAESSY Mount Assembly should be fitted to meet the access needs of the user. The Fitting procedure will determine the correct Frame Clamp size for the wheelchair and the optimum lengths and shapes for the tubes. Any component substitutions or additions, such as additional Offset Links or Frame Clamp Spacers, will be identified in the fitting procedure.

Custom Laptop Holders

Laptop computers are available in a large range of makes, models and configurations. It is not possible to have specific holders for each one, however a custom holder can be manufactured in cases where an off the shelf holder is not available.

Selecting A DAESSY Mount

When determining which DAESSY Mount to purchase for a particular application there are four categories of considerations:

Type of Wheelchair

Is the wheelchair a lightweight manual style or a heavier power drive? Does it have a tilting or fixed seat system? Is it adult-sized or pediatric? DAESSY Mounts have been developed to work with all these types of wheelchairs, however not all DAESSY mounts will work with all types of wheelchairs. There are special considerations related to **Tilting Seat Systems**.

Type of Device

Is the device accessed directly through a touch screen or keyboard, or indirectly through a switch or optical controller? Is the device large and heavy or compact and light? Most of the DAESSY mounting assemblies may be used with most Augmentative Communication Devices and Laptop Computers but there are some combinations that are less suitable and should only be used with a full awareness of the specific cautions.

Ability of User

Is the user able to perform a side-folding or swing-away action or will these actions be performed by an aide?

MAKING TECHNOLOGY MORE ACCESSIBLE

Storage of Mount, Removal from Chair

The DAESSY Quick Release System allows the device to be easily removed from the mount for storage or use on a Desk Mount, however the removal and storage requirements for the mount itself may be a consideration for some applications.

Attachment of Devices to DAESSY Mounts – Plates, Adapters and Holders

A plate, adapter or holder holds communication devices and laptop computers that are mounted on DAESSY mounting assemblies. The style of holder or adapter required must be specified separately from the style of mount, and is a separately sold item.

Mounting plates and adapters are attached to the device with screws in pre-existing holes. Many devices and laptop computers do not have any location where an adapter can be screwed on, and are instead mounted with a specially designed holder that secures the device with stainless steel clips.

All plates, adapters and holders have in common a semi-circular cutout to mate with the Quick Release Base, and a small hole to hold the Quick Release Locking Pin. The QRP1 and MDMT are generic mounting plates that can be used to mount some devices or table surfaces.

Adapters or holders may be available for devices not listed here. New holders are generally brought out as new devices come on to the market.

| Device | Code | Device | Code |
|-----------------------------------|--|---------------------------------------|---------------------|
| AlphaSmart | M ALPHA3 | Messagemate | M MMATE/QRP1 |
| Digicom and Digivox | M DIGIVOX | Macaw | M MMP |
| Dynamo | M DMO | Optimist | M OMP |
| Dynamyte 3100 | M DMTE | PRC Device (any) | M PRC3 |
| Dynawrite | M | Dynawrite (removable) | M RDWH |
| Dynavox 3100 | M DYN3100 | Tech Series 2 devices (AMDi) | TEC2 |
| Dynavox DV4 | M DYNDV4 | Dynavox Maestro device | M DMAE |
| Dynavox MT4 | M DYNMT4 | V, Vmax, M3 (Dynavox) | M DYNSE |
| Easytalk | M EASYTALK | Generic for evaluation purposes | M EVALPLATE |
| Enkidu Impact Handheld 900 | M ENK900 | iAdapter & mini iAdapter (AMDi) | M IACTP2 |
| Enkidu Impact Tablet | M ENKT | Tobii i-devices | M IDTAD |
| Enkidu Tablet XL | M ENKTXL | Basic mounting plate 11-3/4" x 7-7/8" | M MDMT |
| Enkidu Impact Handheld (original) | M ENKI | LC Tech Edge Socket & Connector | M LCSKT/90L |
| E-Talk | M ETALK | Dynavox T10, T15 Adapter | M DYNT1 |
| Gemini | M GEMINI | Prenkte Romich Company devices | M PRC5 |
| iBook Laptop | M IBOOK (model and shape) | Quick Release Plate Basic | M QRP1 |
| PC Laptop | M LAPTOP (specify measurements) | Lightwriter SL40 (Toby Churchill) | M SL40 |
| Lightwriter | M LH/TM3T | Saltillo devices (WCMP equipped) | M SAL5 |
| Link | M LMP | Tech Series 2 devices (AMDi) | M TOBIC2 |
| Macaw | M MCWKBT | Tobii C-Series devices (Tobii) | M TBS32 |
| Mercury | M MERC | Vesa 75x75 or 100x100 compliant | M VMAD |

iPad and Tablet holders

Standard Holders for iPad by Apple

The standard holders allow an iPad to be connected to a DAESSY quick release base in either landscape or portrait orientation. The iPad is housed in a protective case by Ballistic. The adapter fits all DAESSY quick release bases.

- M SBIPD, Standard Holder for iPad 2/3/4 generation
- M SBIPDA, Standard Holder for iPad Air (5th gen)
- M SBIPDM, Standard Holder for iPad Mini
- M SBIPA6, Standard Holder for iPad Air 2 (6th gen) & iPad Pro 9"
- M SBIPD7P, Standard Holder for iPad Pro 12"



Twist Case Holders for iPad by Apple

The Twist Case Holders enable real-time rotation of an iPad between landscape and portrait orientations while attached to a DAESSY quick release base. The iPad is housed in a protective case and the adapter fits all DAESSY quick release bases.

- M GSTIPD2, Survivor Twist Case Holder for iPad 2/3/4 generation
- M GSTIPA5, Survivor Twist Case Holder for iPad Air (5th gen)
- M GSTIPM, Survivor Twist Case Holder for iPad Mini
- M GSTIP2A6, Survivor Twist Case Holder for iPad Air 2 (6th gen) & iPad Pro 9"
- M TBIPD7P, Twist Case Holder (Ballistic) for iPad Pro 12"



As new Tablet computers are launched we continue to add and review mounting options. Custom holders are available on request. Contact us for more information if your computer is not mentioned here.

Mounting on a Tilting Seat System

Mounts suitable for use on a tilting seat system or where an angled installation may be necessary:

Rigid Mount ROP Version – DRM1ROP

The Removable Outer Piece & Receiver allow the mount to be locked onto the wheelchair and provide a secure attachment for use on a tilting seat system. Note the DRM1ROP cannot be swung to the side; it must be removed from the chair for access to the user and during transfers.

Folding Mount ROP Version – DFM2ROP

The Folding Mount ROP Version includes the ability to be locked at the frame clamp similar to the DRM1ROP.

Positioner Mount – DPM9

All adjustable joints must be tightened and secured before use, particularly on a tilt seat system. The frame clamp includes the locking feature to secure for use in a tilted or angled position. When adjusting or loosening any joint of the Positioner Mount the weight of the mount arm and attached device must be supported. Large or heavy devices should be removed during adjustment.

Swing Aside Mount – DSAM4

The Swing Aside Mount includes the Removable Outer Piece & Receiver components that allow the mount to be locked onto the wheelchair and provide a secure attachment for use in a tilted position.

Lockable Rear Folding Mount – DLRFM8

The Lockable Rear Folding Mount only suitable for use on a power wheelchair. The mount includes a manual lock system used in the forward position to secure the mount in place for use in upright or tilted positions. When the mount is folded to the back of the chair it is possible that there will be interference when the seat is tilted and MUST be considered when evaluating for the mount. Sufficient space behind the backrest must remain in the tilted and upright position of the seat.

Mounts not suitable for use on a tilting seat system or where an angled installation is necessary:

- Locking Swing Away Mount – DLSA7
- Rear Folding Mount – DRFM6

Mounts suitable for use on limited tilting seat system not beyond 15 degrees of vertical:

- Rigid Mount – DRM1
- Folding Mount – DFM2

Mounting Systems Components

Alphabetical by part-code Additional components are available



90L – 90° Tube Joint

Connects two stainless steel 7/8" tubes together at a 90-degree angle. Each tube is secured with a Pinch Clamp.



CABLE – Cable Release Assembly (includes RT tube)

Pre-installed on the Right-Angle Tube of the Locking Swing Away Mount (DLSA7) the Cable Release Assembly is used to operate the spring-loaded lock pin in the Locking Swing Away Index Clamp ICLSA.



ELRH+RTHM – Elbow Rotating Head & Tube Mount

A component of the Rear Folding Mount (DRFM6) and the Lockable Rear Folding Mount (DLRFM8), the Elbow Rotating Head & Tube Mount connects the Horizontal Tube and Side Tube with a flexible joint to provide one step in the rear folding sequence.



IC1 – Index Clamp

The Index Clamp attaches to the vertical tube of the Folding Mount (DFM2) and Rigid Mount (DRM1) standard versions and is used to position the mount in the Frame Clamp Outer Piece (UFCOP).



ICLSA – Locking Swing Away Index Clamp

A component of the Locking Swing Away Mount (DLSA7) this index clamp attaches to the vertical tube to position the mount in the Locking Swing Away Outer Piece (LSAOP) and includes the spring-loaded lock pin that is operated by the Release Cable Assembly (CABLE).



LRFA+RTHTM+O3L(R) & LRFA+RTHTM+O3L(L) – Locking Rear Folding Adapter & Tube Mount with Lock Mechanism and Offset Link

Attached to the frame clamp assembly of the Lockable Rear Folding Mount (DLRFM8) the Locking Rear Folding Adapter & Tube Mount holds the Side Tube and provides the rear folding motion of the folding sequence. The Lock Mechanism secures the mount in the forward position while in use and is directional Available for both Right and Left hand mounting. This component is supplied with one Offset Link (O3L).



LSAOP – Locking Swing away Outer Piece

The outer piece of the Locking Swing Away Mount (DLSA7), the Locking Swing Away Outer Piece has three lock-pin holes that the spring-loaded lock pin of the Locking Swing Away Index Clamp (ICLSA) secures. Each lock-pin hole is lined with a plastic insert that over time may wear or break; an economical replacement kit is available (order code: KITLSAOP).

LSARH-LSATM/TUBE/CABLE – DSAM Horizontal Tube assembly

The Horizontal Tube and Locking Swing Aside Rotate Head with Release Cable are preassembled for the Swing Aside Mount (DSAM4). The tube cannot be changed. The rotational head allows the mount to be swung away when installed onto a vertical mount tube. There are three lock-pin location holes to allow the mount stops at across in-front of user, 90 degrees away and 180 degrees around to the side.



MH3/IPA – Multi-hole Inner Piece Adapter

When no accessible wheelchair frame tubing is available for clamping an inner piece, the Multi-hole Inner Piece Adapter may be used on a square tube where boltholes are located for attachment of accessories. The component has seven 1/2" spaced boltholes to provide compatibility with most wheelchair frame bolt patterns; two bolts are used to secure the component to the frame at a minimum spacing of 1".

Available for round frame tubing with boltholes is the MH3R/IPA Multi-hole Round Tube Adapter.

A smaller multi-hole adapter is also available. MH2/IPA and MH2R/IPA



QRP1 – Quick Release Plate

A basic mounting plate 4 3/4" x 4 1/4" for use with the DAESSY Total Quick Release Base (TUSB) or alternate quick release base style (USBA, USBF, USB etc.) MDMT – Basic Mounting Plate 11 3/4" x 7 3/4"



O3L – Offset Link

The Offset Link is used between an Inner Piece and Outer Piece (or Rear Folding Adapter) to provide 3" offset distance between the two components. A mount assembly should use a maximum of 2 Offset Links; when more offset distance is required a custom S-Bend Tube should be considered. Each Offset Link will move the outer piece 1/2" further outwards.

When multiple Offset Links are needed and it is important to keep the outer piece in as close as possible the Single Sided Offset Link O3LS should be used in place of at least one standard Offset Link. The Single Sided Offset Link attaches to Inner Piece and Outer Piece on the same side of the link.



RB+RTHTM – Rotating Base & Tube Mount

Used with a Quick Release Base (USB) the Rotating Base provides real-time rotation of an attached device around 180 degrees.



RFA+RTHTM – Rear Folding Adapter & Tube Mount

Attached to the frame clamp assembly of the Rear Folding Mount (DRFM6) the Rear Folding Adapter & Tube Mount holds the Side Tube and provides the rearward folding motion of the folding sequence.

RFCI-RFCR – Removable Frame Clamp Assembly

Can be added to the frame clamp assembly of a Rear Folding Mount or Lockable Rear Folding Mount to allow easy removal of the mount assembly from the wheelchair. The addition of this component will move the rear-folding adapter further out from the wheelchair frame approx. 1 3/4".





ROP-RFCR – Removable Outer Piece & Receiver

The Folding Mount ROP Version (DFM2ROP), Rigid Mount ROP Version (DRM1ROP) and Swing Aside Mount (DSAM4) use these components to provide the ability to lock the mount assembly in position on a wheelchair. Allows the mount to be used on a tilting seat system securely.



RTH+2RTHTM – Folding Mechanism & 2 Tube Mounts

The Folding Mechanism and 2 Tube Mounts connect the vertical and horizontal tubes of the Folding Mount providing the folding sequence function.



SLV – Adapter Sleeves

Adapter Sleeves are used to fit larger inner piece sizes onto smaller and non-standard size tubing. Standard Adapter Sleeve sizes include 1" to 7/8", 1" to 3/4", and sleeves for square, 2" x 1" rectangular and to fit the Quickie S-525 or Invacare Power 9000 frame. Custom adapter sleeves are available.

TC135A, TC180, TC90, TC90A – Tube Connectors



Tube Connectors are used to join two stainless steel 7/8" tubes at a fixed angle.

- TC135A – 135° Y angle
- TC180 – 180° parallel
- TC90 – 90° Elbow (used with the Rigid Mount DRM1)
- TC90A – 90° Tee

TM3T – Tube Mount



The Tube Mount is used to connect components to a 7/8" tube. Can be used independently to attach a tray to 7/8" tube. The Tube Mount has two 1/4" threaded holes.

TUSB – Total Quick Release Base



The Total Quick Release Base is the receiver installed onto the horizontal tube of a mount assembly to attach any device equipped with a DAESSY adapter, holder, plate or compatible plate.

UFCxxxxIP Standard Frame Clamp Inner Pieces



- UFC875IP** – Frame Clamp Inner Piece 7/8" Round Standard
- UFC1000IP** – Frame Clamp Inner Piece 1" Round Standard
- UFC1125IP** – Frame Clamp Inner Piece 1 1/8" Round
- UFC1250IP** – Frame Clamp Inner Piece 1 1/4" Round
- UFC1500IP** – Frame Clamp Inner Piece 1 1/2" Round
- UFC2000IP** – Frame Clamp Inner Piece 2" Round
- UFC1375IP** – Frame Clamp Inner Piece 1 3/8" Round
- UFC1000SIP** – Frame Clamp Inner Piece 1" Square
- UFCRTIP** – Frame Clamp Inner Piece 3/4" x 1 1/2" Rectangular
- UFCSTIP** – Frame Clamp Inner Piece 1 3/8" x 2 1/4" Rectangular

The Frame Clamp Inner Piece clamps onto a wheelchair frame tube for attachment of a mount assembly. Frame Clamp Inner Pieces are available in several sizes and styles.

Specialised & Modified Frame Clamp Inner Pieces



- UFC875SMIP** – 7/8" Side Mount Inner Piece
- UFC1000SMIP** – 1" Side Mount Inner Piece
- 875FSMIP** – 7/8" Front Side Mount Inner Piece
- 1000FSMIP** – 1" Front Side Mount Inner Piece

UFC1000IPMOD – Modified Frame Clamp Inner Piece 1" Round, narrower version of the UFC1000IP requires only 1 1/4" clearance



UFCOVSMIP – Elliptical Mount inner Piece, primarily for use on Quickie S-626 & S-646 wheelchairs seat frame.

UFCMFIP – Frame Clamp Inner Piece Multiple Fit Assessment, primarily used for evaluation purposes; can be setup to fit square and rectangular tubing sizes ranging from 1" to 3" square.



UFCOP – Frame Clamp Outer Piece

The Frame Clamp Outer Piece holds the vertical tube of the Folding Mount (DFM2) and Rigid Mount (DRM1); used with the Index Clamp (IC1) for positioning.



UFCSPCR – Frame Clamp Spacer

The Frame Clamp Spacer can be used between an inner piece and outer piece, or offset link, to provide 3/4" extra distance outwards. A maximum of 2 Frame Clamp Spacers can be used.



USB – Quick Release Base

Provides a receiver for attaching a device equipped with an appropriate DAESSY adapter. The Quick Release Base can be bolted directly to a tray or used with a Device Accessory Clamp (AC875IP/UACDM) for attachment to the top of a vertical tube. Formerly provided with a Tube Mount TM3T as standard quick release base with all mount assemblies, replaced by TUSB Total Quick Release Base.

USB+AC875IP/UACDM – Quick Release Base Stem Mounted

The Quick Release Base Stem Mounted can be used to position a quick release base at the top of a vertical 7/8" stainless steel tube.



USBA+TMAT – Sideways Tilting Quick Release Base & Tube

The Sideways Tilting Quick Release Base can be used to install a device at a sideways angle for more comfortable access by the user.



USBF – Folding Quick Release Base (USB)

The Folding Quick Release Base provides real-time adjustment to rotate the quick release base and attached device around the horizontal tube with 6 stop positions.

MAINTENANCE BITS

DMSTOOLS – Assembly Tools for Mounting System; includes 3/16" Allen (hex) key, Tommy Bar & 5/32" Allen (hex) key.

INSLA – LSAOP Inserts, replacement plastic inserts (set of 3).

KITLSAOP – LSAOP Insert Replacement Kit contains a set of 3 new plastic inserts and a tool to extract the old plastic inserts from the Locking Swing Away Outer Piece.

LPSR(USB) – Lock Pin, Spring & Ring USB, replacement locking pin for a quick release base.

LPSR(ICLSA) – Lock Pin, Spring & Ring ICLSA, replacement locking pin for a Locking Swing Away Index Clamp.

PINCH – Pinch Clamp, used to hold stainless steel tube in DAESSY components; this clamp is required for installation and is relatively small.



SWIVEL – Swivel Clamp, used to connect components of the Frame Clamp Assembly (when used with a Frame Clamp Spacer the longer bolts required are supplied with the spacer).



MISCELLANEOUS

MSC – Manfrotto Super Clamp Table Clamp by Gruppo Manfrotto used with the Clamp Desk Mount (DMC) and DAESSY Stem System.



DAESSY Stem System

The DAESSY Stem System allows for the mounting of switches in a manner that is suitable to each user's specific application. It is highly adjustable, unobtrusive and versatile systems to meet switch mounting requirements. Compatible with some different systems using simple adapters, the Stem System can be used to complement an existing system currently used.

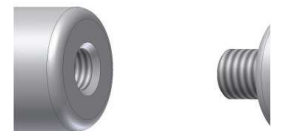
- **A modular system with interchangeable components.**
- **Numerous configurations possible.**
- **Solid, permanent switch mount solution.**
- **Highly adjustable allowing precise positioning.**
- **Accessory mounting clamps designed for use on a wheelchair frame.**
- **Compatible with some other switch mount systems.**

DAESSY Stem System components are available individually and in assembly kits.

ASSEMBLY DESCRIPTION

The modular design of the Stem System means the number of possible configurations is almost limitless. There is no wrong or right way to build a Stem System switch mount. To build a switch mount you start with a clamp location, an attachment point to the wheelchair or table. From this location you build the switch mount by combining appropriate components one by one up to the switch position selected.

Stem System components are joined by internal and external tapered threads. During assembly these threads are tightened enough that they will not move during normal use. Threads close to the switch end do not need to be as tight as those near the mounting clamp. The tools needed for assembly and installation are a 5/32" Allen (hex) key, 3/16" Allen (hex) key, a 9/16" wrench, 5/8" wrench or 3/4" wrench.



A kit is available with all necessary tools for installation of the Stem System. The Stem System Assembly Tools Kit includes a 3/16" Allen (hex) key, 5/32" Allen (hex) key, 9/16" Wrench and Vise Grip® Locking Wrench to fit 3/4" and 5/8" sizes. The Locking Wrench is also used to grip connecting stems with brass sleeves incl

Stem System Assessment & Evaluation Kits

Stem FlexiArm Switch Mount

Order code:

SFSM-S

The Stem FlexiArm Switch Mount provides the components for a simple, flexible switch mount. Excellent for switch position assessment and short-term solutions the Stem FlexiArm can be repositioned and adjusted without the need for tools.

- **Easy to set-up and change position.**
- **Excellent for switch position assessments.**
- **Simple and flexible.**

Includes one standard Accessory Mounting Clamp for attachment to a tube, the Stem FlexiArm, a Clamp End Fitting and one End Flange for attachment of the switch. A 3/16" Allen Key is required for installation of the mounting clamp (included). Default Accessory Mounting Clamp provided to fit 1" round tube. May be changed to 7/8" round clamp at no extra charge.



Default Accessory Mounting Clamp provided to fit 1" round tube. May be changed to 7/8" round clamp at no extra charge

Stem FlexiArm Releasable Switch Mount

Order code:

SFSM-R

The Stem FlexiArm Releasable Switch Mount provides the components for a simple, flexible switch mount with a Releasable Mounting Clamp for easy removal of the mount.

- **Excellent for switch position assessments.**
- **Switch mount is easily removed from mounting clamp.**
- **Highly adjustable.**

Includes one Releasable Mounting Clamp, the Stem FlexiArm, a Clamp End Fitting and one End Flange for attachment of the switch. A 3/16" Allen Key is required for installation of the mounting clamp (included).

Default Releasable Mounting Clamp provided to fit 1" round tube. May be changed to 7/8" round clamp at no extra charge.



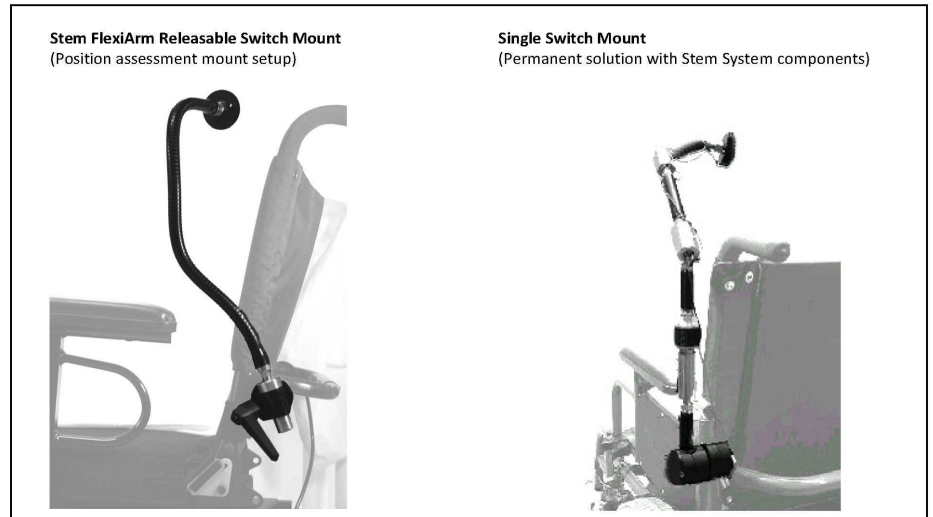
Stem System Evaluation Kit

Order code:

SS04-EK

The Stem System Evaluation Kit includes all the components to build a Stem FlexiArm assessment switch mount, and a single or double switch mount assembly. Useful in determining what DAESSY Stem System components can be used and/or are needed for placing switches where they need to be for a permanent mount solution. There is no wrong or right way to build a Stem System switch mount.

- Ideal for assessment centres and providers.
- Allows numerous configurations and setups.
- Precise positioning possible with this highly adjustable system.



Disassembly of the tapered thread connections on Stem System components is possible but not always easy when the parts have been tightly assembled. For this reason it is not appropriate to use the individual Stem System components alone as an evaluation tool requiring rapid changes in connecting stem lengths or other components.

Individual components of the Stem System Evaluation Kit

- 1 – Accessory Mounting Clamp (AC1000IP/UAC875)
- 1 – Stem Index Collar (SIC)
- 1 – Stem Quick Release (SQR)
- 2 – End Flange, Buddy Button Internal (SEF-BBF(int))
- 1 – Stem Joint (SSJ)
- 1 – S-Bend Tube (S-18x6)
- 4 – 4” Connecting Stem (SCS-04)
- 1 – 12” Connecting Stem (SCS-12)
- 1 – Stem FlexiArm (SFA)
- 1 – Set of Installation Tools



- 1 – Releasable Mounting Clamp (UAC1000/RMC)
- 2 – Stem Ball Joint (SBJ)
- 1 – Stem Connector 90 degree External (SC90(ext))
- 2 – Adjustable Angle Stem Connector (SSAC)
- 1 – Tube to Stem Adapter (T-S)
- 2 – 2” Connecting Stem (SCS-02)
- 2 – 8” Connecting Stem (SCS-08)
- 1 – 16” Connecting Stem (SCS-16)
- 1 – Clamp End Fitting Internal (CEF(int))

Stem System Mount Kits

All kits include the 2” diameter end flange with the screw pattern for a Buddy Button. Substitution for a different end flange is possible, see individual component for available end flanges and fittings.

When ordering a mount kit it is not necessary to list each individual component. Customizations, additions and changes are possible in all kits; contact us for information and pricing.

Switch Mount Kit Order code: **SMK**

The Switch Mount Kit provides the components to build a typical switch mount assembly.

- **Sturdy, secure switch mount solution.**
- **Several configurations and setups possible.**
- **Easily removed and repositioned.**



- **Stem Ball Joint tension adjustable to set amount of force needed to move switch position.**
- **Designed as a switch mount can also support a camera or small lightweight device.**
(Not suitable for loads over 4 lbs)

The design of the Stem Ball Joint allows limitless articulation between attached components. It also provides the ability to adjust the tension setting the amount of force needed to move the switch position. Movement of the Stem Ball Joint while tightened will not damage the component nor loosen the tension.

Additional installation tools not supplied are 9/16" Wrench and Vise Grips®, available separately.

Dual Switch Mount Kit

Order code:

DHK

The Dual Switch Mount Kit provides the components to build a dual switch mount for attachment at the back of a wheelchair and positioning of switches near the user's head area.

- **Sturdy, secure switch mount solution.**
- **Easily removed from the wheelchair and repositioned.**
- **Highly adjustable.**
- **Several configurations and setups possible.**

A 7/8" Stainless Steel Tube is used when there is a great distance in between the available clamp location on a wheelchair and the required position of the switch mount to provide greater rigidity and stability.

Substitutions and changes to kit contents are possible; contact us for information and pricing.

Default Releasable Mounting Clamp provided to fit 1" round tube. May be changed to 7/8" round clamp at no extra charge.



Stem System Components

(Switch mounting components)

ACxxxxIP/UACxxxx – Accessory Mounting Clamp



The Accessory Mounting Clamp is used to attach the DAESSY Stem System to a wheelchair.

The ACxxxxIP part is used to attach to various sizes of round, square or rectangular tubing; the UACxxxx part holds a Connecting Stem (SCS-xx) with the aid of a 5/8" Delrin sleeve or holds a 7/8" stainless steel tube. A Swivel Clamp holds the Accessory Mounting Clamp together. **AC1000IP/UAC875** – Accessory Mounting Clamp 1" / 7/8"

AC1000SIP/UAC875 – Accessory Mounting Clamp 1"SQ / 7/8"

AC1250IP/UAC875 – Accessory Mounting Clamp 1 1/4" / 7/8"

AC875IP/UAC875 – Accessory Mounting Clamp 7/8" / 7/8"

ACRTIP/UAC875 – Accessory Mounting Clamp 3/4"x1 1/2" / 7/8"

UAC875 – Accessory Clamp (7/8" round) – requires an ACxxxxIP

UAC1000 – Accessory Clamp (1" round) – requires an ACxxxxIP

ACSPCR – Mounting Clamp Spacer – used to increase the space between the Mounting Clamp IP (ACxxxxIP) and the Accessory Clamp (UACxxxx)

The exception to the standard set-up is when space around the wheelchair is limited (such as a backrest) therefore making it difficult to use an ACxxxxIP. In this situation the UACxxxx would be used to attach to the wheelchair (round tube only) and an ACxxxxIP would hold the Connecting Stem or 7/8" tube.

SQR – Stem Quick Release

This component allows for the quick detachment of a switch mount assembly without losing the original switch position upon reinstallation. External threads at either end connect to any DAESSY Stem System component with internal threads.

Three counter clockwise turns of the black rubber-locking sleeve on the transferred to a second wheelchair or Stem Quick Release loosen the body enough for it to be twisted and location that has a socket installed. lightly pulled up free of the socket. It can also be rotated out of the way. Re-installation is accomplished simply by placing the switch mount back into the socket with a twisting motion until the body clicks into place and tightening the black rubber-locking sleeve in a clockwise direction.

SQR – Stem Quick Release (complete component)

SQRbody – Stem Quick Release body – part of the Stem Quick Release with the black rubber locking sleeve.

SQRsocket – Stem Quick Release socket – part of the Stem Quick Release available separately; a DAESSY Stem System assembly can be transferred to a second wheelchair or location that has a socket installed.



UACxxx/RMC – Releasable Mounting Clamp

An Accessory Clamp (UACxxx) of correct tubing size attaches to the wheelchair and is fastened by two bolts (3/16" Allen Key). Adapter Sleeves cannot be used with the Accessory Clamp; the correct size must be used. Attached to the Accessory Clamp by the same two bolts is the Releasable Clamp (RMC) that holds 7/8" stainless steel tubing or a Connecting Stem (SCS-xx) with a plastic adapter sleeve. The clamp is tightened by a hand lever and holds the tubing firmly in place.

Once the Accessory Clamp (UACxxx) is attached to the wheelchair the Releasable Clamp may be twisted to allow for the switch mount tubing to be positioned at an angle as necessary. Once a suitable position is found the entire assembly is tightened by 2 bolts and held firmly in place. If after final tightening of the hand lever it has stopped in an obtrusive position it may be repositioned without further tightening or loosening by pulling the lever back from the shaft. This allows the lever to be turned independently of the lever shaft and be moved to an unobtrusive position.

UAC1000/RMC – Releasable Mount Clamp (1" round)

UAC875/RMC – Releasable Mount Clamp (7/8" round)

RMC – Releasable Clamp – requires a UACxxx

RMChandle – Plastic Handle for Releasable Clamp

RMC1000IP – Releasable Clamp for Inner Piece – this style of Releasable Clamp can be attached to a 1" round frame tube or smaller round tube with adapter sleeves. Standard adapter sleeves included 1" – 7/8" and 1" – 3/4". Requires clearance around the frame tube; wrap three fingers around the frame tube to check available clearance.



SCS-XXX – Connecting Stem

The Connecting Stems are anodized aluminum tubing with internal threads for attachment to DAESSY Stem System components with external thread. They can be attached to internal thread components with use of a Stem Joint (SSJ). The Connecting Stems allow for custom height and reach set-ups based on individual needs, wheelchairs used, etc. through the use of different length stems.

SCS-02 – Connecting Stem 2 inch length

SCS-04 – Connecting Stem 4 inch length

SCS-06 – Connecting Stem 6 inch length

SCS-08 – Connecting Stem 8 inch length

SCS-12 – Connecting Stem 12 inch length

SCS-16 – Connecting Stem 16 inch length



SBJ – Stem Ball Joint

The Stem Ball Joint is a component with external threads at either end of the part. The Stem Ball Joint connects to any DAESSY Stem System component with internal threads. It allows many different settings through rotation and articulation with the convenience of only one locking bolt. One end of the Ball Joint allows for rotation only, while the other end allows for rotation and articulation.



SSAC – Adjustable Angle Stem Connector

The Adjustable Angle Stem Connector is used to join two internally threaded components at an angle between 90° and 180°. Most commonly used between Connecting Stems (SCSxx) or between a Connecting Stem and an End Flange (SEF-XXXxxx)



SSJ – Stem Joint

The Stem Joint rigidly connects two DAESSY Stem System components with internal threads. It can be used to convert an internally threaded component to external thread. A 9/16" wrench is used for tightening this component.



SFA – Stem FlexiArm

The Stem FlexiArm is an adjustable, bendable arm easily repositioned by hand without tools. Ideal for use in switch position assessment, each end is fitted with Stem external thread for attachment of Stem components with internal thread.



SEF-XXXxxx – End Flange

An end flange is a flat disc with either internal or external threads for attachment to other DAESSY Stem System components.

°End flanges are pre-drilled with holes to match the pattern thread) of a Buddy Button™ (or Big Buddy™) and of a Jellybean SEF-JBFint – End Flange for Jellybean Button™

°An end flange with ¼"x20 camera mount thread is available for the use of switches that use this thread style.

Switches can be connected to any end flange using adhesives or Velcro if the pre-drilled holes do not suit the particular application.

SEF-BBFext – End Flange for Buddy Button™ 2" diameter (external thread)

SEF-BBFint – End Flange for Buddy Button™ 2" diameter (internal thread)

SEF-JBFext – End Flange for Jellybean Button™ 3" diameter (external thread)

SEF-JBint – End Flange for Jellybean Button™ 3" diameter (internal thread)

SEF-1/4x20 – End Flange for ¼"x20 camera thread



SC90(xxx) – Stem Connector 90 degree

The Stem Connector allows for a tee connection between Connecting Stems and other DAESSY Stem System components. A Connecting Stem is placed horizontally through the Stem Connector and clamped down by 2 bolts (5/32" Allen Key).

SC90(ext) – Stem Connector 90 degree (external thread) -will fit into DAESSY Stem System components with internal thread (i.e. Connecting Stems or Tube-Stem Adapter T-S(int)).

SC90(int) – Stem Connector 90 degree (internal thread) -will fit onto DAESSY Stem System components with external thread (i.e. Stem Ball Joint or Adjustable Angle Stem Connector).



T-S(int) – Tube-Stem Adapter

The Tube-Stem Adapter slides inside 7/8" stainless steel tubing and provides the end of the tubing with internal threads for the attachment of an externally threaded DAESSY Stem System component. DAESSY Stem System components with internal thread can be attached using the Stem Joint (SSJ). A single bolt (3/16" Allen Key) inside the T-S(int) is tightened to keep the adapter in place.



SIC – Stem Index Collar

The Stem Index Collar allows the positioning of the S-Bend Tube height and rotation within the Releasable Mounting Clamp (UACxxx/RMC). When in the desired position on the tube it is tightened with a 5/32" Allen Key.

When the S-Bend Tube slips into the Releasable Mounting Clamp the Stem Index Collar rests on the clamp (preventing the tube from sliding down any further). A positioning notch on the Stem Index Collar fits onto the positioning pin on the clamp so that the desired position can be regained after removal and replacement easily.



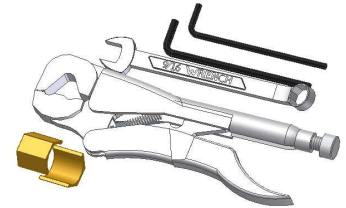
CEF(int) – Clamp End Fitting

The Clamp End Fitting has internal thread for attachment of an external thread component. Used to fit into a 7/8" accessory clamp, the Releasable Mounting Clamp or similar.



SSTOOLS – Stem System Assembly Tools

Tools used with the DAESSY Stem System are 3/16" Allen (hex) key, 5/32" Allen (hex) key, 9/16" Wrench and a Vise Grip® with brass sleeve inserts to grip Connecting Stems.



Compatibility with other Switch Mount systems

The DAESSY Stem System can be used in conjunction with other switch mount systems and components used for switch mounting with simple adapters.

Compatibility with Manfrotto equipment

Manfrotto equipment such as the Magic Arm, Variable Friction Arm and Super Clamp are often used in switch mount applications. In the USA Manfrotto equipment is also known under the name Bogen.



Magic Arm and Variable Friction Arm Adapters

EFA – End Adapter 1/4"x20-Stem Thread Attaches to the 1/4"x20 thread at the end of a Magic Arm or Variable Friction Arm providing external thread for attachment to DAESSY Stem System components with internal thread (i.e. End Flange)



MA – Magic Adapter Locks onto the end of the Magic Arm or Variable Friction Arm, providing a 7/8" shank that can be held in the Releasable Mounting Clamp for a secure attachment to round tubing. An index notch in the Magic Adapter sets its position in the Releasable Clamp.



Super Clamp Adapters

SCA(ext) – Super Clamp Adapter (external thread) Locks into the 5/8" hexagonal socket of a Super Clamp and allows the DAESSY Stem System with internal thread to be attached to a desk or table edge. Also used with the Clamp Desk Mount DMC.



SCA(int) – Super Clamp Adapter (internal thread) Locks into the 5/8" hexagonal socket of a Super Clamp and allows the DAESSY Stem System with external thread to be attached to a desk or table edge.



(Magic Arm, Variable Friction Arm and Super Clamps are products of Gruppo Manfrotto <http://www.manfrotto.com>) (Magic Arm is sometimes known as the Bogen Arm)



Compatibility with other systems

TASH Switch Mounting System

TASH(ext) – TASH ½” End Adapter (external)

A ½” diameter shank with external thread provides compatibility with TASH mounting components, ½” diameter tubes and switches with ½” diameter ‘arm’.

TASH(int) – TASH ½” End Adapter (internal)

A ½” diameter shank with internal thread provides compatibility with TASH mounting components, ½” diameter tubes and switches with ½” diameter ‘arm’.

Daessy Lite Mounting System

The DAESSY Lite Mount system expands on the quality systems created and made by Daedalus Technologies Inc. Providing a component based system for switches, tablets and smaller mount needs. The Lite Mount has two distinct connector styles for varied applications and numerous configuration possibilities. Interchangeable, individual components provide for easy changes as needs require and limitless configurations.

The AF Ball Clamp connectors provide secure and highly adjustable streamlined connectors for the lightest weight applications. Two balls within the clamp can be infinitely articulated to the exact angle required and are locked down with a clamp bolt. In the event a mount joint is overloaded the ball clamp will allow the balls to move and absorb the impact.

The ITC Indexed Clamp connectors provide a strong, adjustable joint for lightweight devices, tablets and switches. Mount tubes can slide through the clamp for length adjustment in setup. A ‘notched’ hirth face between the ITC clamps gives the ability for a very strong joint.

Lite Mounts are available with switch plate end fittings, fixed holders or the DAESSY quick release system. Attach your Lite Mount to a chair, table clamp or directly to a device mount.

Using AF Ball Clamps:

- The tubes used with an AF Ball Clamp have a ball-end at one or both ends. Lengths are available from 2” to 12” tube plus the ball-end(s). The ball-ends are factory installed.
- AF Ball Clamps are available in three sizes, the larger the ball the stronger the joint. The AF Ball Clamp sizes are marked on the component. Tube ball-ends are available in sizes to match the clamps.
- The bolt in the AF Ball Clamp secures the joint with a 5mm hex tool (Allen key).



Using ITC Indexed Clamps:

- The ITC Indexed Clamp is comprised of two clamps sized for the tube diameters being used in the mount. The tubes can be rotated in the clamp and slid through for adjustment. The ITC Indexed Clamp allows adjustment of Angle between the tubes.
- Various clamp sizes are available for tube diameters used with the Lite Mount system.
- The bolt in the ITC Indexed Clamp secures the joint with a 5mm hex tool.



Lite Mount AF Kits:

Tablets & Lightweight, small communication devices*

Lite Mount AF2 Chair Mount with device & chair quick releases

- Two AF articulated joints for positioning
- Device quick release compatible for all DAESSY adapters/mounting plates
- Standard 1” round tube clamp included (others sizes available)
- Locking quick release base clamp

M AF2QR-01-CQ - overall span approximately 18”

M AF2QR-02-CQ - overall span approximately 22”



Switch mounts

Lite Mount AF2 Chair Mount with switch end flange

- Two AF articulated joints for positioning
- Standard 1" round tube clamp included (others sizes available)
- Locking quick release base clamp

M AF2S-01-CQ - overall span approximately 18"

M AF2S-02-CQ - overall span approximately 22"

Lite Mount ITC Kits:

Tablets & Lightweight, small communication devices*

Light Mount ITC Chair Mount with device & chair quick releases

- Two ITC indexed clamp joints for positioning
- Device quick release compatible for all DAESSY adapters/mounting plates
- Standard 1" round tube clamp included (others sizes available)
- Locking quick release base clamp

M ITC2-Q1-C - overall span approximately 18"

M ITC2-Q2-C - overall span approximately 22"



